

2-091 Swinghandle RS PrC

Key or tool actuation, IP65, Cutout C, Round rods

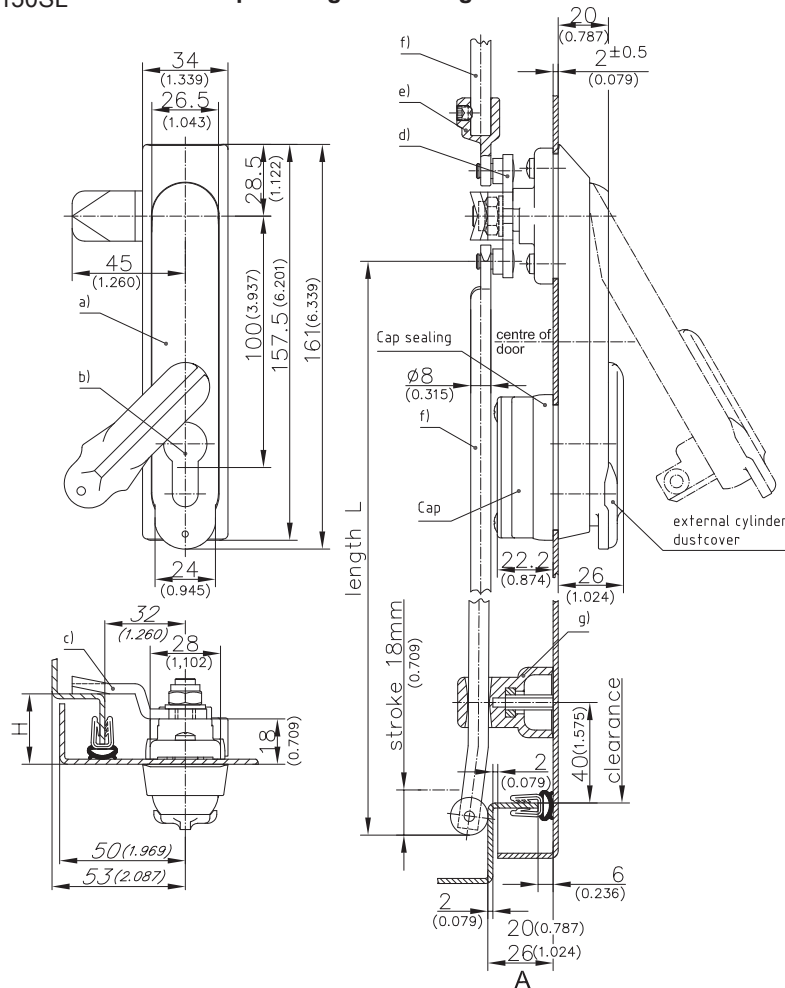
Product Notes:

- Uses 3-point cams and round rods
- Opening rotation is 90°
- Uses profile cylinders 40mm with 45° locking cam
- Water and dust tight according to IP65, DIN EN 60529
- RH and LH application
- Dimensions of cutout PrC - see Product System 3-010
- Other swinghandle versions available - see Product System 2-090 (PA/Zinc Die)
- Other round rod - see Product System 2-090, 2-090SL and 7-065
- Tool-less installation - see Product System 2-090SL and 3-150SL

- Flat rod version - see Product System 3-150, 3-150SL, 3-151 and 7-060
- Stainless steel - see Product System 7-060 and 7-065

Material:

- **Dish and handle:** Zinc Die, Black
- **Bearing plate:** Zinc Die, Untreated
- **Cover:** Zinc Die, Black
- **Shaft:** Brass, Untreated
- **Cap:** PA6 30GF Black
- **Wave washer:** Spring Steel
- **Tapping screws:** Steel, Zinc Plated
- **Countersunk screw:** Stainless Steel
- **Cap sealing and O-rings:** NBR



	Part No.	See Page
a) Swinghandle with cap and external dustcover for profile cylinder 40mm	107-9208	
b) Profile cylinder		02.65
c) Cams		01.42, 01.101, 01.102
d) 3-point cams		01.101, 03.43
e) Adapter for round rods		03.49, 03.50
f) Round rods		03.46, 03.47
g) Rod guide for bending A20	200-3601.03	
Rod guide for bending A26	200-3602.03	
h) Sliding Cap	207-9702	02.62
The sliding cap can be used for profile cylinders from Product System 2-140 and also for raised profile cylinders.		