

3-912 Dual Hook FS

Flat rods

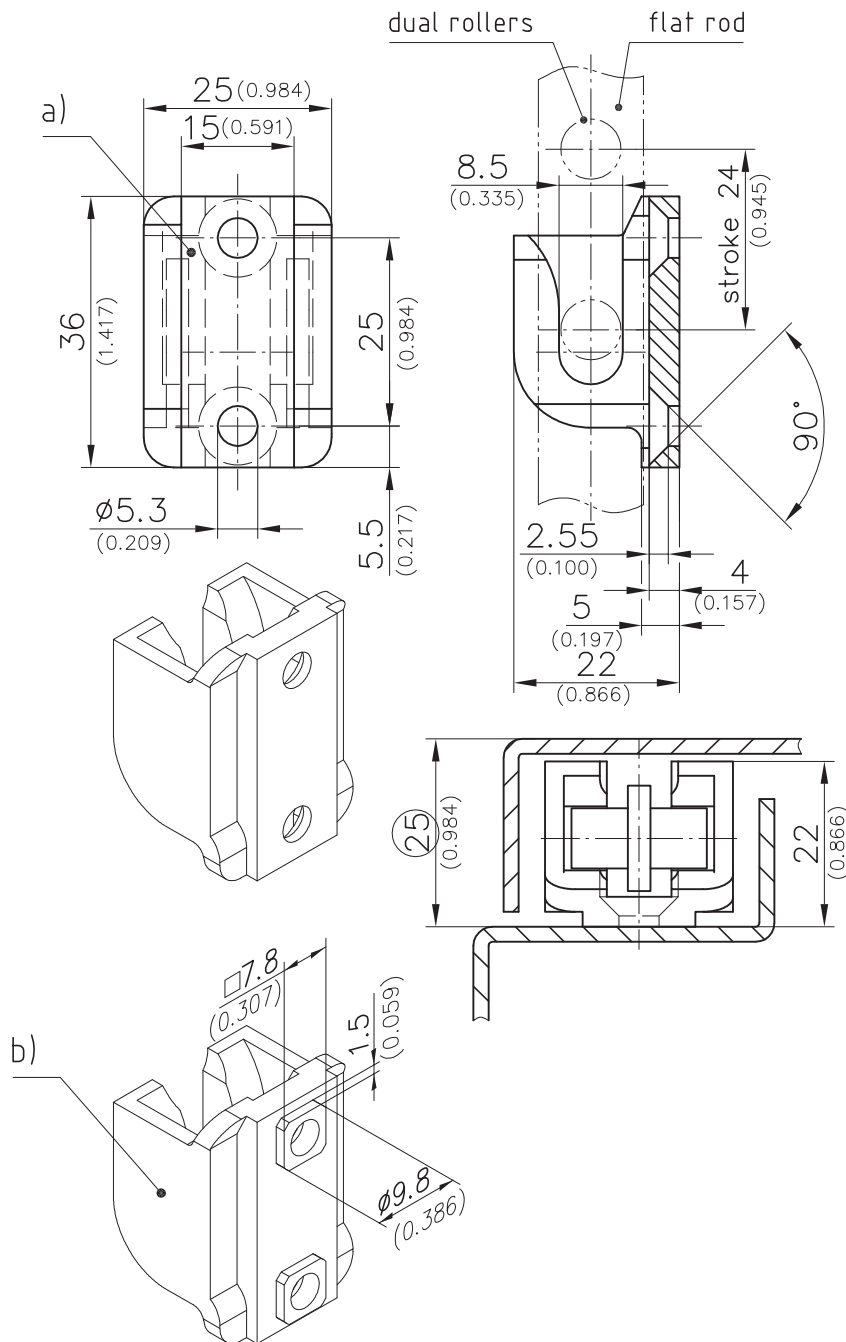
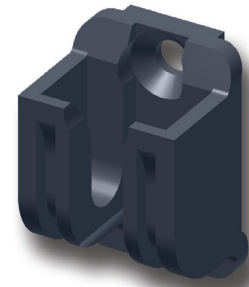


Product Notes:

- Dual Hook
- Installed with M5 screws
- Other PA - see Product System 3-910
- Tool-less installation - see Product System 3-910SL and 3-960SL
- Stainless steel - see Product System 7-910

Material:

- Dual Hook: PA



	Part No.
a) Dual hook for flat rods	208-1446.50
b) Dual hook with threaded stubs, for flat rods	208-1447.50*
*Price and delivery time on request.	
Other dimension see a) (Order-No. 208-1446.50)	