

7-910 Dual Hook

Stainless Steel

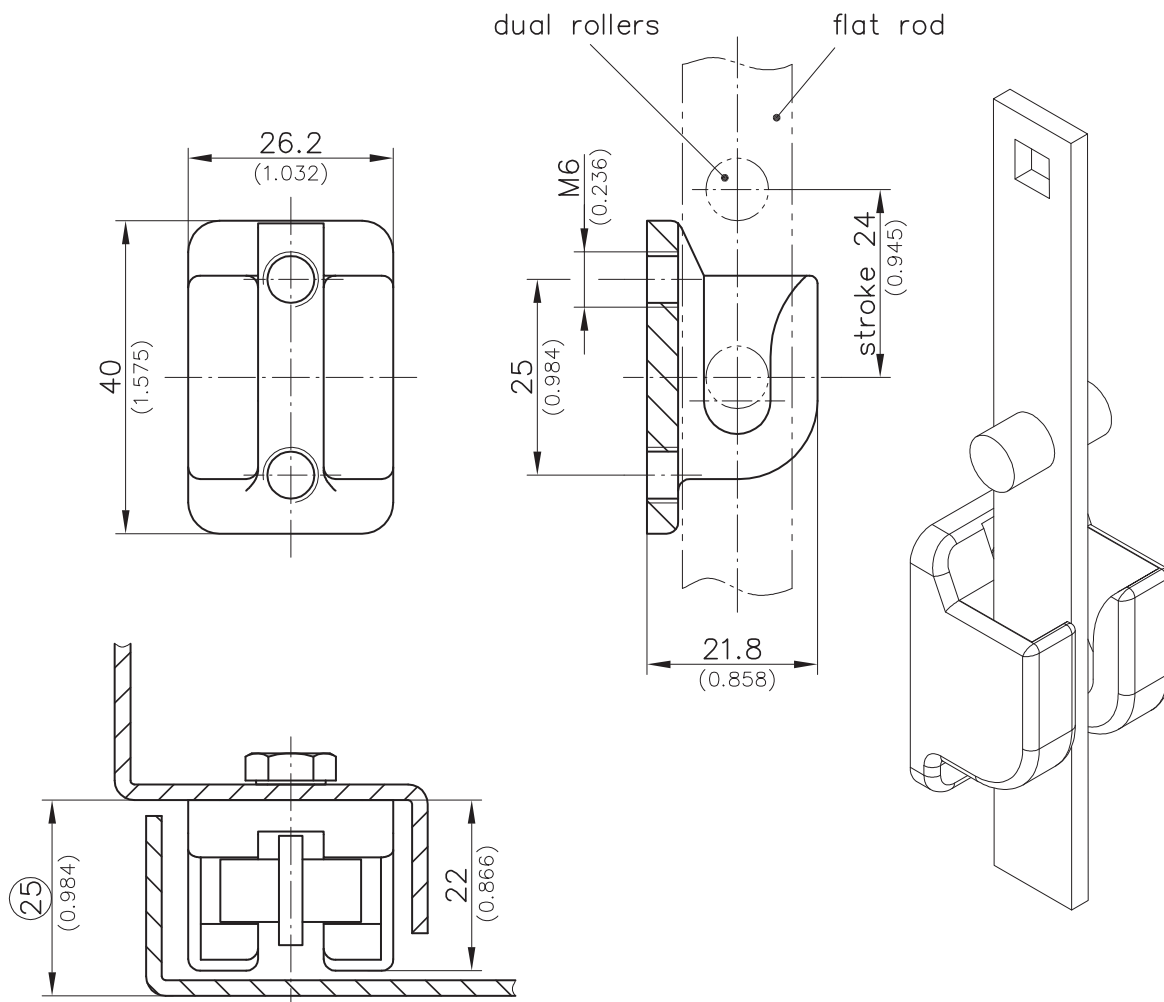


Product Notes:

- Dual Hook
- Installed with M6 screws
- Water and dust tight according to IP65, DIN EN 60529
- PA - see Product System 3-910 and 3-912
- Tool-less installation - see Product System 3-910SL and 3-960SL

Material:

- **Dual Hook:** Stainless Steel AISI 316, Surface Bead Blasted Finish



	Part No.	See Page
Dual hook with threaded M6	208-1439.95	
Flat external seal for IP65, one side self adhesive	208-1803	
Order separately:		
Screws M6		10.22