

# 3-911SL Rod Guide FS SNAP-LINE

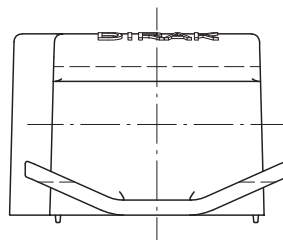
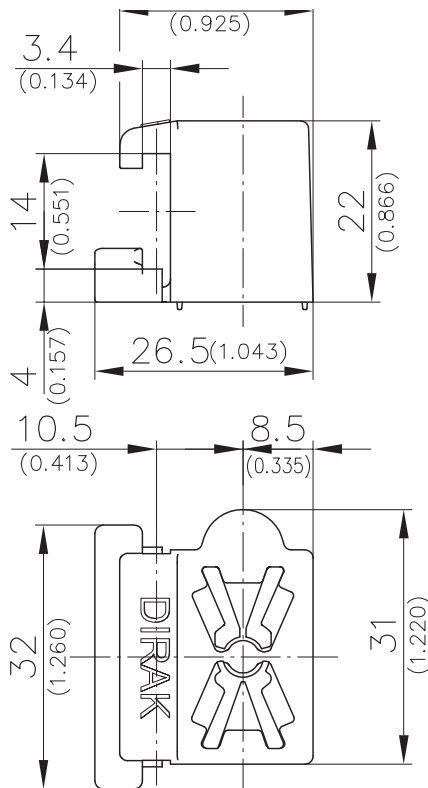
Tool-less installation, Flat rods

## Product Notes:

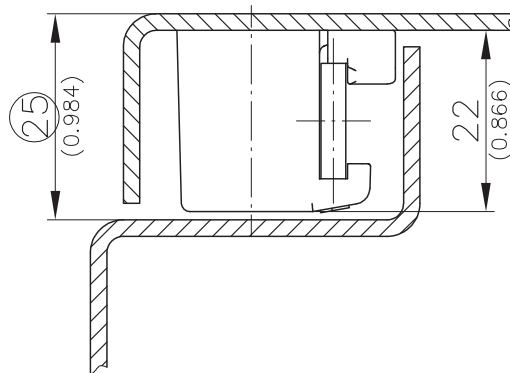
- Rod Guide for flat rods
- Quick installation by pushing onto a welded stud (M6 x 16mm - 20mm (0.630-0.787))
- The rod guide slides onto the threads until it locks securely in place. Correct Installation is indicated by an audible "click"
- Can be removed with or without flat rod system
- Rod guide can be removed by unscrewing or by spreading the two clips with a screwdriver
- Vibration resistant
- Visual inspection possible from above

## Material:

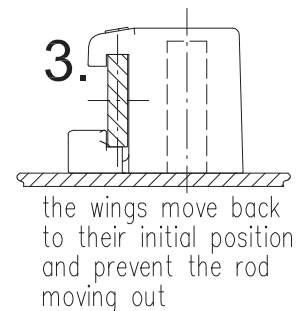
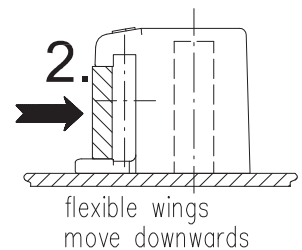
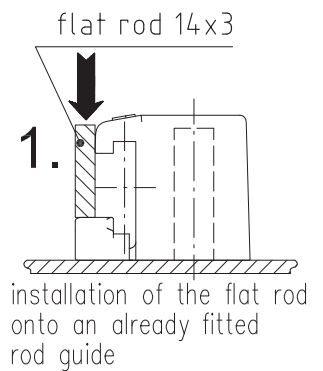
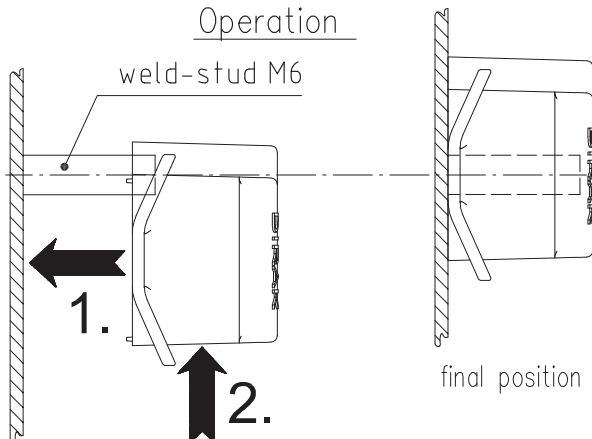
- Rod Guide: PA



Example of application



## Operation



Rod Guide for flat rods

Part No.  
208-1523.54-00000