

3-161SL Flat Rod for Ramp shoe SNAP-LINE

Tool-less installation, Flat rods

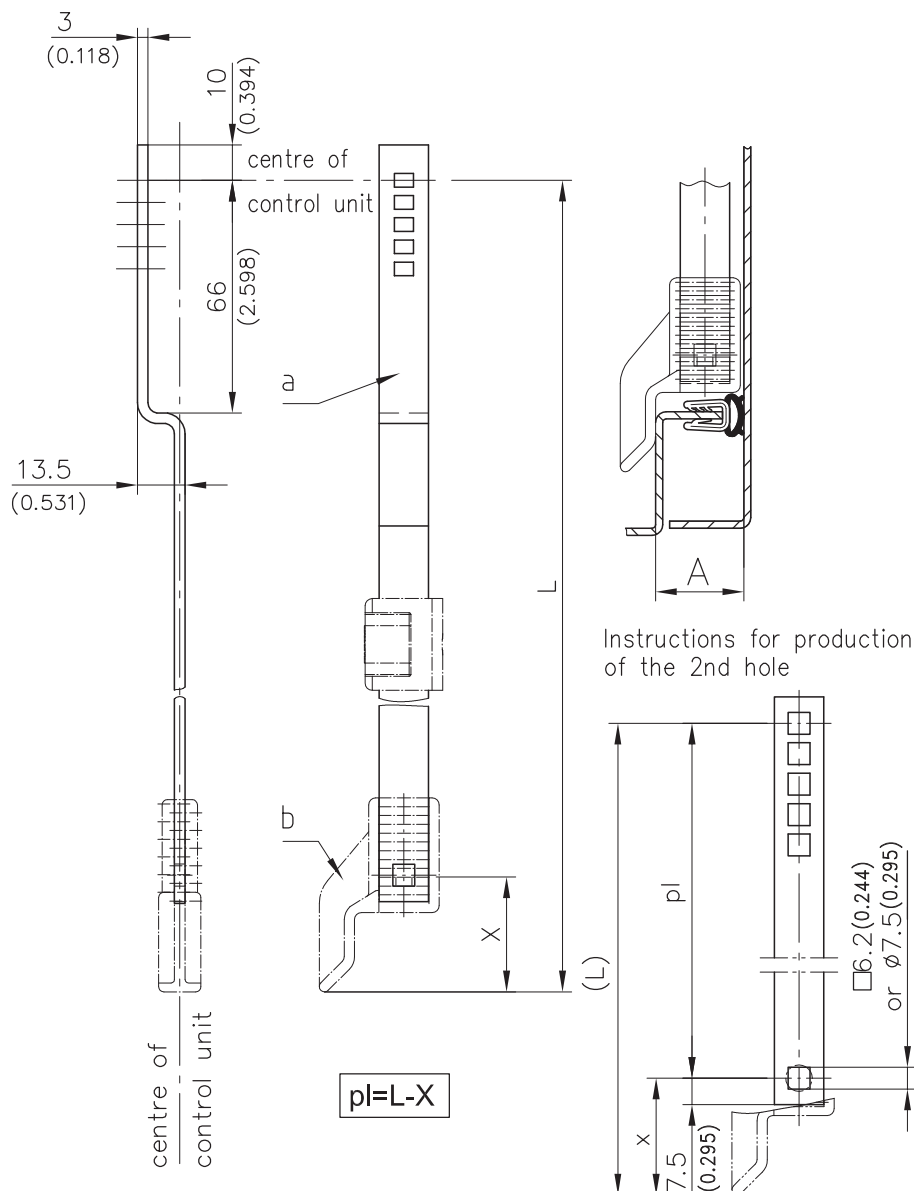


Product Notes:

- Flat rod for SNAP-LINE rod system
- Use with ramp shoe
- Rods are used with rod control unit. Top part must be inserted as per drawing with 5 openings in the rod latch (Product System 3-150SL)
- Designed for use with special length rods
- The bottom of the flat rod requires a square 6.2mm or a round 7.5mm hole.
- The ramp shoe is pushed onto the rod and snaps into the hole

Material:

- **Flat rod:** Steel, Zinc Plated
- **Ramp shoe:** PA, Black



For Part No. please contact DIRAK. Please advise following details:
1. Lengths X and L
2. Dimension A

a) Flat rod for ramp shoe

208-1063.15-pl in mm

Formula for calculation of the rod length $pl = L - x$

e.g. $L = 1000\text{mm} - X = 32.5 = 967.5\text{mm}$

b) Ramp shoe for standard frame

Bending A	Dimension X	
18 / 0.709	32.5 / 1.280	208-2403.03-00018
20 / 0.787	32.5 / 1.280	208-2403.03-00020
25 / 0.984	32.5 / 1.280	208-2403.03-00025