

1-193SL Rod Guide RS SNAP-LINE

Tool-less installation, Round rods

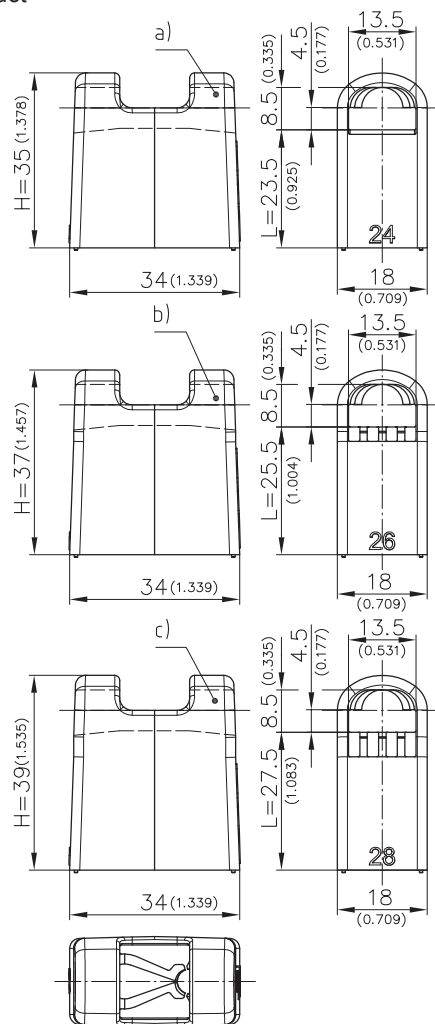


Product Notes:

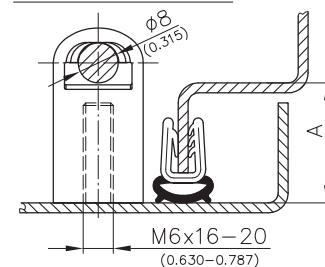
- Use with 8mm(0.315) round rods
- Quick installation by pushing onto a welded stud (M6 x 16mm - 20mm (0.630-0.787))
- The rod guide slides onto the threads until it locks securely in place. Correct Installation is indicated by an audible "click"
- In order to ensure appropriate application of force, the Rod Guide must be installed as shown in the figure below
- Visual inspection possible from above
- Rods can be installed on guide before attaching to welded stud. Rod guide can then be pushed onto the welded stud
- Rod guide can removed by unscrewing or by spreading the two clips with a screwdriver
- Other PA adapter - see Product System 1-190 and 1-192

Material:

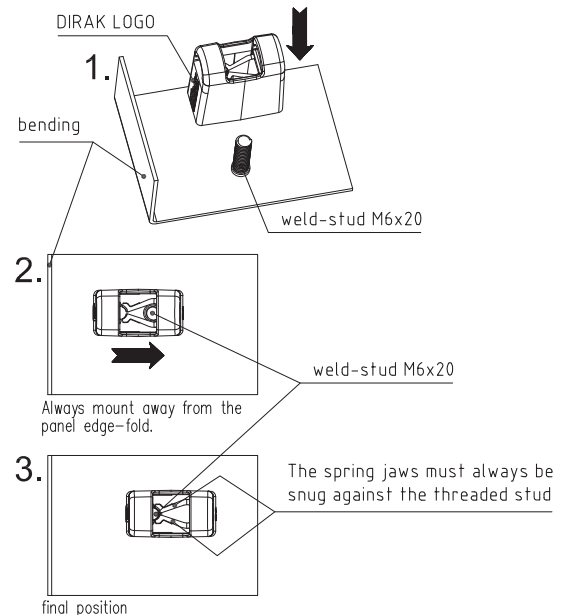
- Rod guide: PA
- Pull-off forces up on request.



Example of application



Operation on weld-stud



In its final position, the rod guide must always be oriented such that the DIRAK Logo is facing the panel edge-fold.

Rod Guide Bending		L mm / inch	H mm / inch	Part No.
a)	A24	23.5 / 0.925	35 / 1.378	200-3616.54-00000
b)	A26	25.5 / 1.004	37 / 1.457	200-3617.54-00000
c)	A28	27.5 / 1.083	39 / 1.535	200-3618.54-00000