

7-106.01 Cam Adapter 45°

Stainless Steel

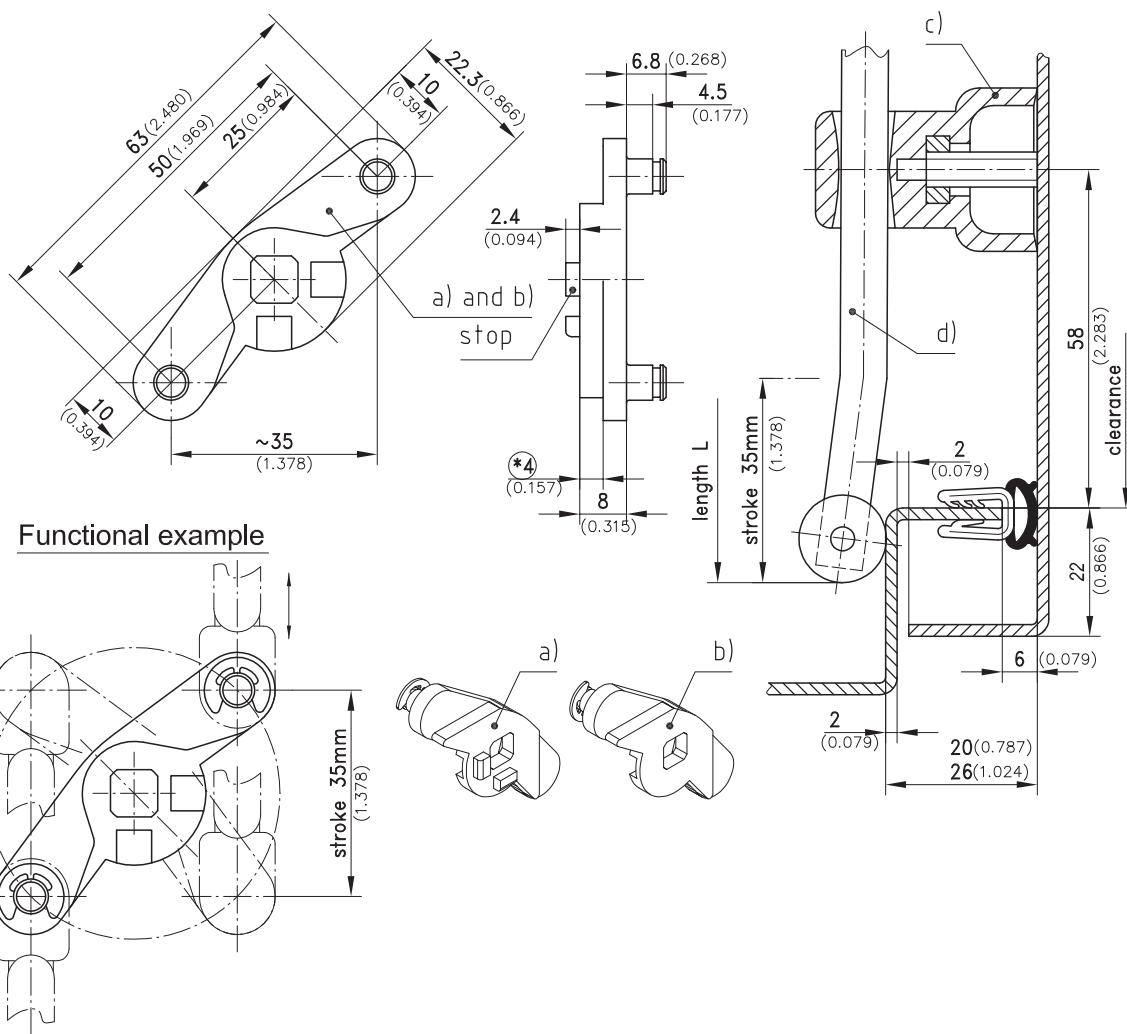
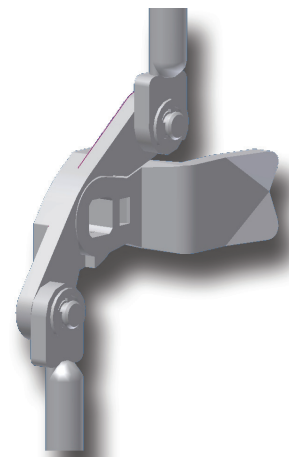


Product Notes:

- 3-point cam adapter with built-in stop
- For use with stainless steel swinghandle - see Product System 7-066
- For use with Product System 7-080
- Stroke is 35mm
- For use with round rods - see Product System 7-106
- **NOTE:** H dimension of cam increases by 4mm. - cam 200-0518 results in an H-dimension of 22mm - see Product System 2-151

Material:

- **3-point cam adapter:** Stainless Steel AISI 316L



	Part No.	See Page
a) 3-point cam adapter including 2 c-clips with stop	200-9598.00	
b) 3-point cam adapter including 2 c-clips without stop	207-9594.00	
c) Rod guide for bending A20	200-3601.03	03.52
Rod guide for bending A26	200-3602.03	03.52
d) Round rod with eye		03.48