

2-151 2-, 3- and 4-Point Cam Adapter

2, 3, 4-point cam adapter with stop for swinghandles

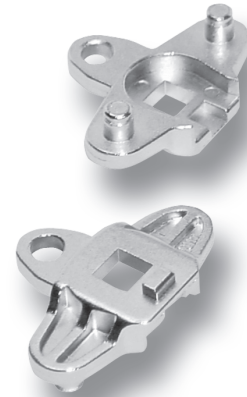


Product Notes:

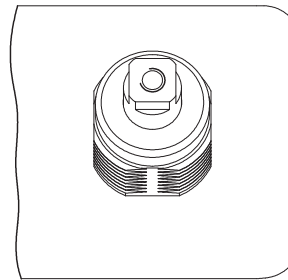
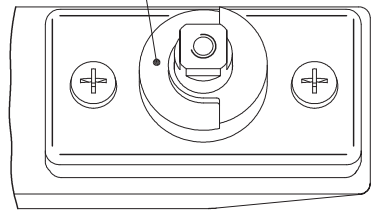
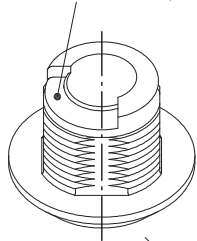
- These cam adapters are an alternative to a 2-point rod control and 3-point cam as shown see Product Systems 1-102 and 2-150
- Two version are available - 3-point adapter and 4-point adapter
- Each version has two options - with or without stop
- Use one of the versions WITHOUT a stop if the Quarter-Turn or Swinghandle does not have a stop
- Use one of the versions WITH a stop if the Quarter-Turn or Swinghandle has a stop

Material:

- **3-point cam adapter and 4-point cam adapter:** Zinc Die, Zinc Plated
- **Note:** H-dimension of cam (C) increases by 4mm / 0.157.
E.g. cam 200-0418 results in an H-dimension of 22mm/0.866. Please pay attention to the screw length: screw should enter at least 6mm / 0.236.

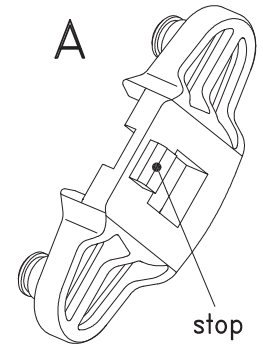


typical 200 series 90° stop typical swinghandle 90° stop LH+RH swinghandle without stop

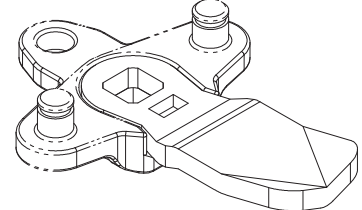


You need: Version WITH 90° stop
Apply: A (2 point) or A+C (3 point)

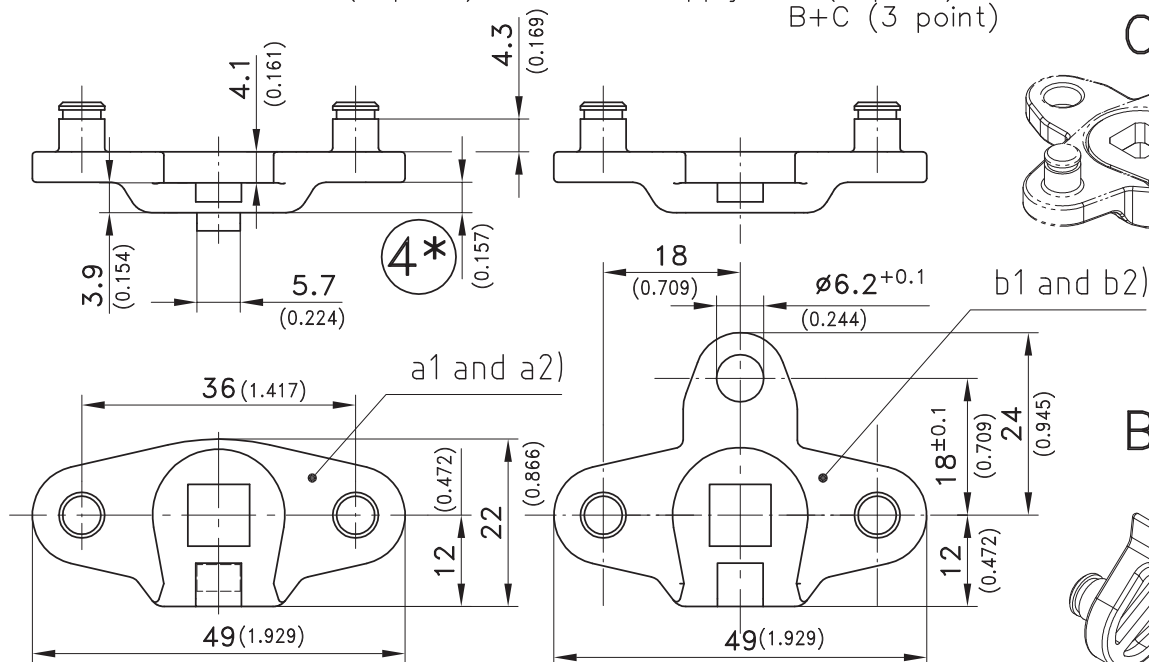
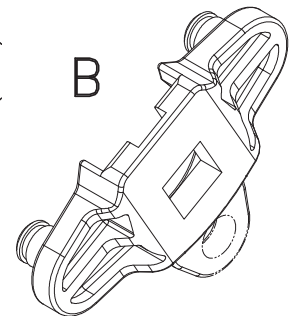
You need: Version WITHOUT 90° stop
Apply: B (2 point) or B+C (3 point)



C (cam)



B



	Part No.
a1) 3-point cam adapter with stop (incl. 2 c-clips and screw M6x10)	200-9596
a2) 3-point cam adapter without stop (incl. 2 c-clips)	207-9596
b1) 4-point cam adapter with stop, with eye (incl. 2 c-clips and screw M6x10)	200-9595
b2) 4-point cam adapter without stop, with eye (incl. 2 c-clips)	207-9595