

3-165 Rod Latch FS PrA, PrB and PrC

Cutout A, B, and C, Flat rods, Right angle terminal

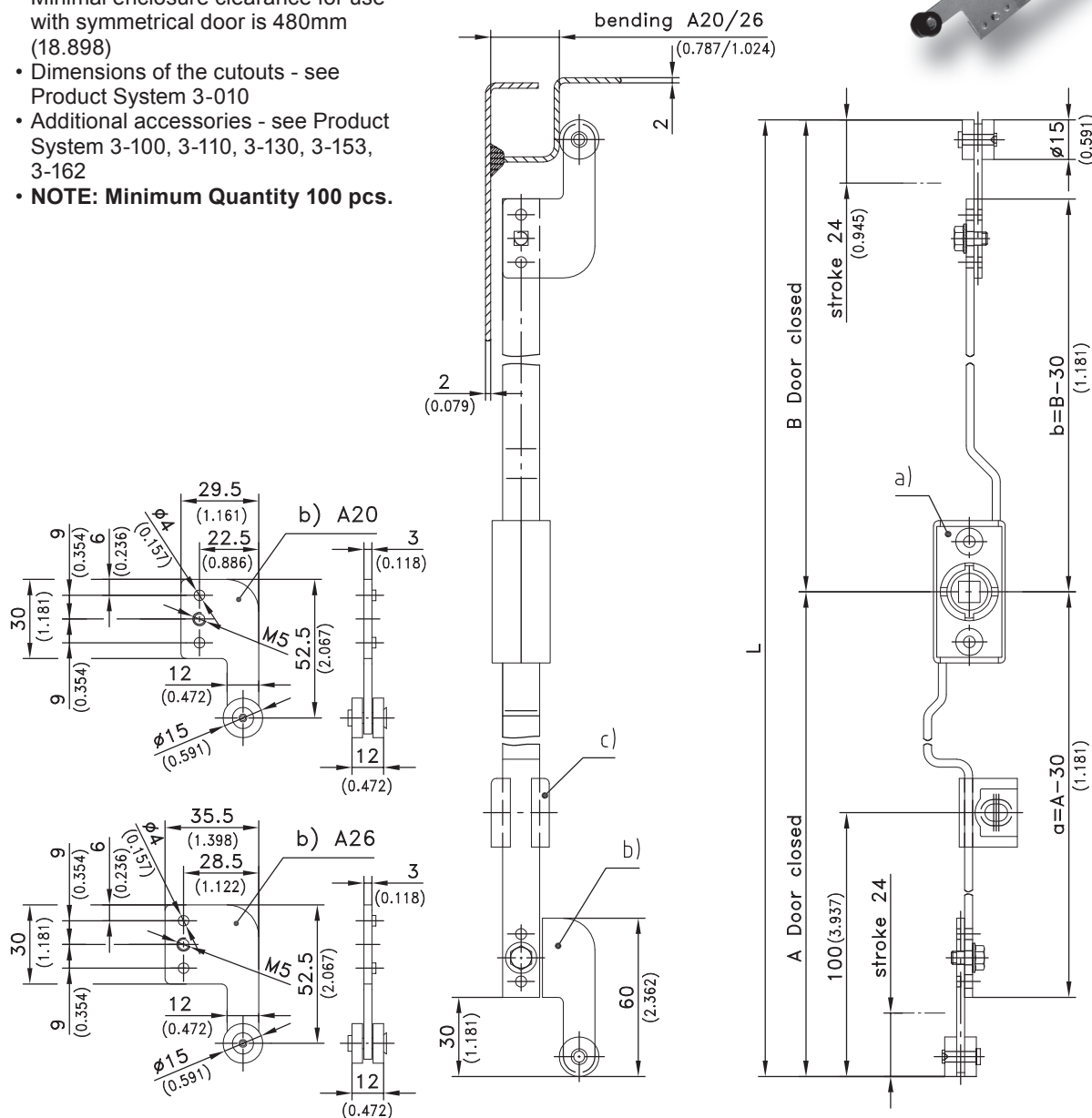
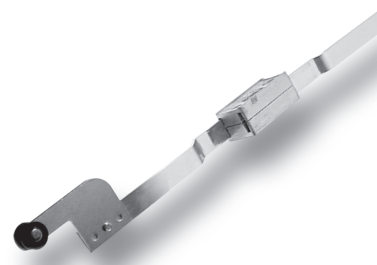


Product Notes:

- Rod latch systems are pre-assembled and ready for installation
- Please indicate: Bending A and dimensions A and B (door closed). This system is installed on the inside of the sealed area
- RH and LH application
- Can be applied for cutout version PrA, PrB and PrC
- Minimal enclosure clearance for use with symmetrical door is 480mm (18.898)
- Dimensions of the cutouts - see Product System 3-010
- Additional accessories - see Product System 3-100, 3-110, 3-130, 3-153, 3-162
- **NOTE: Minimum Quantity 100 pcs.**

Material:

- **Rod latch:** Zinc Die, Untreated, Steel, Zinc Plated
- **Flat rod:** Steel, Zinc Plated



Version	Part No.	See Page
a) Rod latch for Right angle terminal (minimum order-quantity: 100 pcs., price and delivery time on request)	208-9715.00-L in mm	
b) Right angle terminal A20	208-9902.00-00020	
Right angle terminal A26	208-9902.00-00026	
Right angle terminal A16, A18, A22, A24 and A30	on request	
c) Rod guide		03.64

Note: Drawing is in door closed position with hinges on LH side.