

3-135 Add-on Escutcheon to PrA, PrB and PrC

Cutout A, B and C



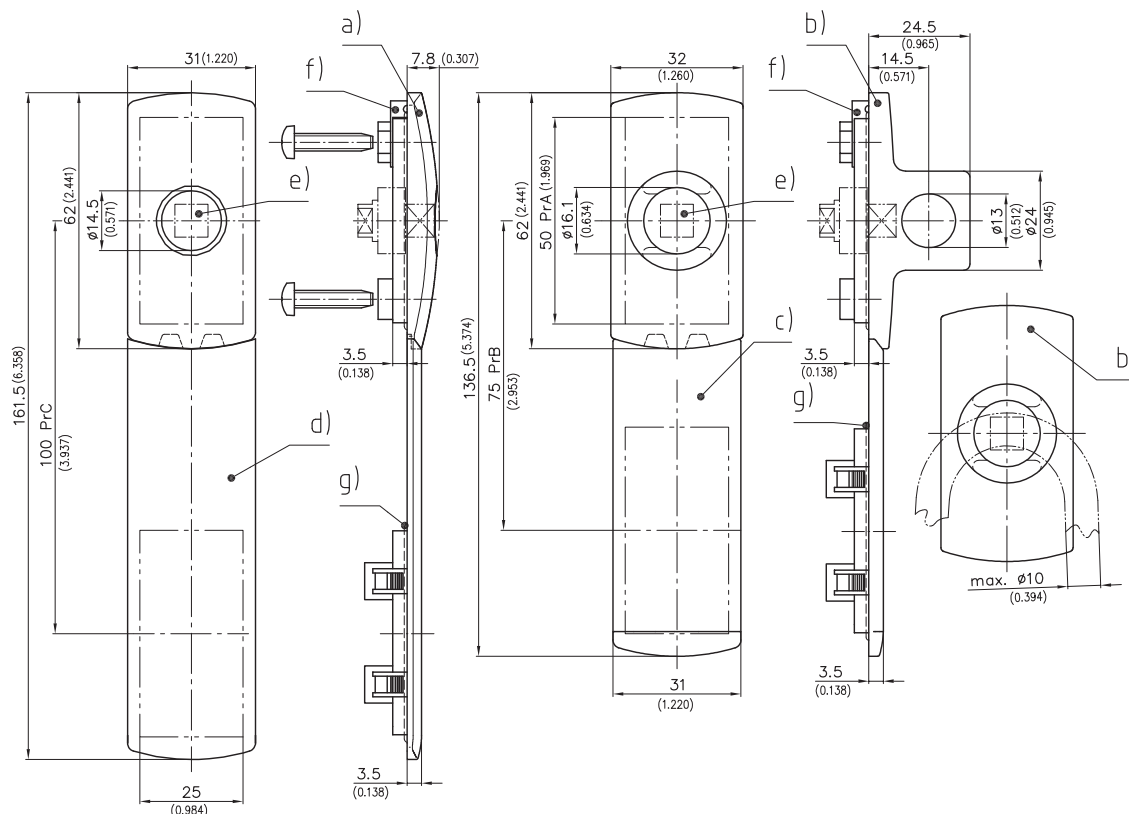
Product Notes:

- Escutcheon for cutouts PrA, PrB and PrC (25mm x 50mm) - see Product System 3-010
- For Pr B and Pr C, escutcheon consists of two parts: short upper part and a lower clip-in cover extension
The short upper part is installed into the upper cutout as shown on Product System 3-100 and fastened to the Rod Latch
The lower extension can then be slipped underneath the fitted upper part and can be clipped into the lower cutout
- Use with Rod Latch systems application - see Product System 2-070, 2-080.01, 3-070, 3-130, 3-132.01, 3-165 and 3-170

- Padlockable version available.
Shackle diameter Ø10mm/0.394inch

Material:

- **Escutcheon and extensions:** PA, Black
- **Escutcheon for padlock:** Zinc Die, Black
- **Insert:** Zinc Die, Chrome Plated
- **Grounding clip:** Stainless Steel AISI 304
- **O-Ring:** NBR, Black



Version	Part No.	See Page
a) Escutcheon 2 screws and 1 O-Ring are included, cutout PrA	208-9305	
b) Escutcheon for padlock with 2 screws and 1 O-Ring are included, for Cutout PrA	208-9312	
c) Short extension, for cutout PrB	208-0522.03	
d) Long extension, for cutout PrC	208-0523.03	
Please order seperately:		
e) Insert		03.20
f) Grounding clip	208-1201.04	03.64
g) O-Ring for extention	209-4003	
Cover for cutout		03.28