

3-311 Rods and Accessories FS

Flat rods, Fits narrow frame width

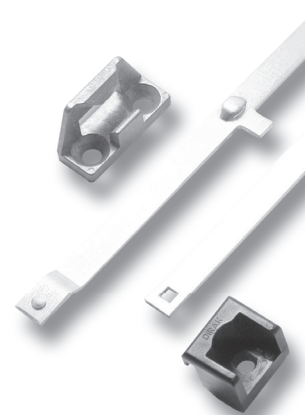


Product Notes:

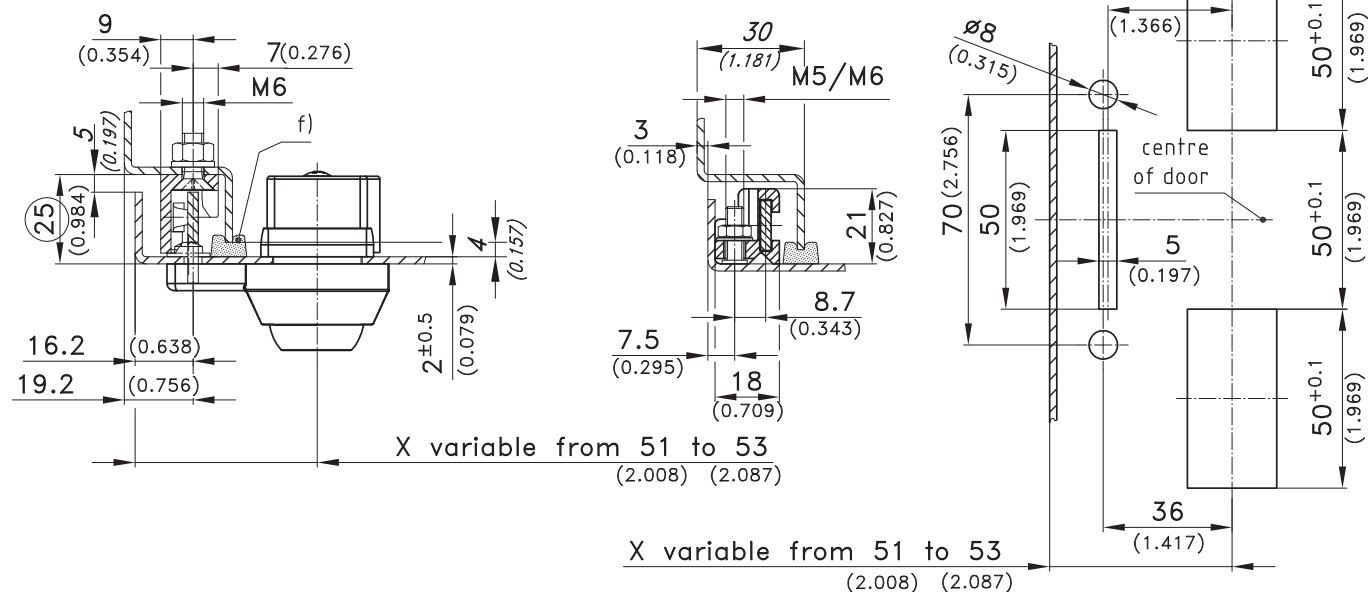
- Latching rods and accessories for use with swinghandles OFFSET-DUO-3 - see Product System 3-310
- Shown below is a 3-point system for a RH door
All rods run exactly in line with the lower rod starting from the center of the door, symmetrical to the (not shown) upper rod
- Door can be installed RH or LH since the positions of the latching hooks are identical to those of the hinges
- Minimal frame width of 30mm

Material:

- **Rods:** Steel, Zinc Plated
- **Latching hook:** Zinc Die
- **Rod Guide:** PA, Black



Sample of application for extremely NARROW frame width



				Part No.	See Page
a) Central Controlling Rod per lock system order 1 off.				307-9001	
b) Extension rod	Door Height	Distance of hook			
Per lock system order 2 off	Th	A	Numbers of Latching Hooks		
	800-1200	300	2	208-0942	
	1200-1600	500	2/3	208-0943	
	1600-1900	700	3	208-0944	
	1900-2200	850	3	208-0945	
c) Latching Hook				208-1424	
d) Rod Guide NARROW for weld stud M5				208-1509.03	
Rod Guide NARROW for weld stud M6				208-1517.03	
e) Profile cylinder, according DIN 18252					02.65
f) Rectangular Gasket					05.21

3-311 Rods and Accessories FS

Flat rods, Fits narrow frame width

