

2-450 Closing Device for Emergency-Exit

Hand and internal operable, Optional with Swinghandle, WKII/RC security tested, Meets DIN EN 179

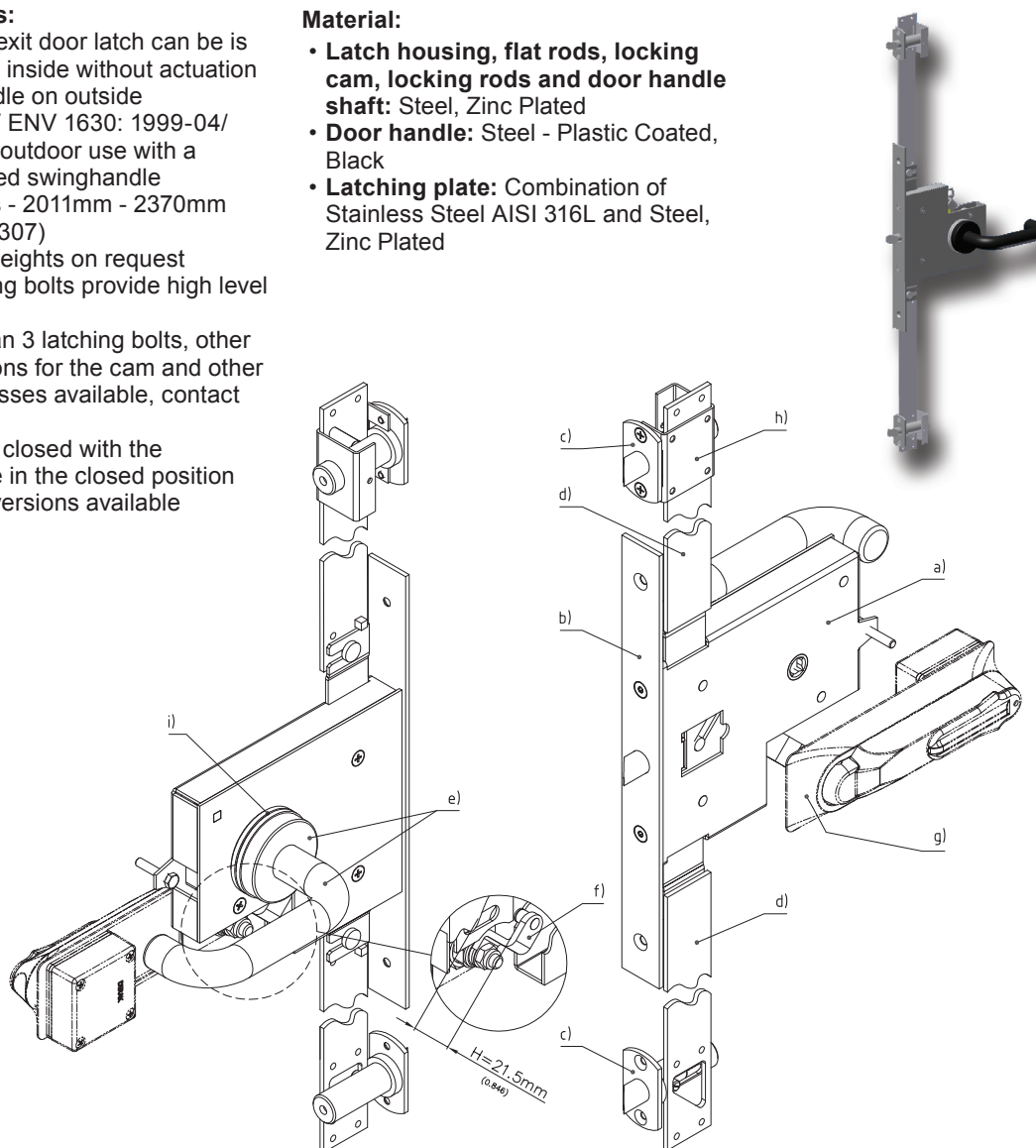


Product Notes:

- Emergency-exit door latch can be is opened from inside without actuation of swinghandle on outside
- Meets DIN V ENV 1630: 1999-04/ WKII/RC for outdoor use with a security tested swinghandle
- Door heights - 2011mm - 2370mm (79.173 - 93.307)
Other door heights on request
- Three latching bolts provide high level of security
For more than 3 latching bolts, other "H" dimensions for the cam and other door-thicknesses available, contact DIRAK
- Door can be closed with the Swinghandle in the closed position
- RH and LH versions available

Material:

- **Latch housing, flat rods, locking cam, locking rods and door handle shaft:** Steel, Zinc Plated
- **Door handle:** Steel - Plastic Coated, Black
- **Latching plate:** Combination of Stainless Steel AISI 316L and Steel, Zinc Plated



Emergency closing set with unmounted casement (a-f)	Part No.	See Page
RH (as drawn)	238-9500.00-00000	
LH	238-9500.00-00001	
Emergency closing set without casement (a, c, d, e, f)		
RH (as drawn)	238-9500.00-00002	
LH (as drawn)	238-9500.00-00003	
Components of the emergency closing sets (without fixing screws):		
a) Latch housing with latching bolts		
b) Casement		
c) 2 x Latching plates, supplied loose		
d) 2 x Flat rods (1 x above and 1 x below) incl. runner		
e) Door handle incl. 9mm square shaft and rosette		
f) Latching cam (H=21,5mm/0.846)		
Components not part of standard supply:		
g) Swinghandle (WK2)		02.46, 02.48, 02.60
• Rod guides h), lock support or distance bushing for door handle i) have to be fitted according to the customer design and door-thickness.		
• For technical support please contact DIRAK.		
• Prices and delivery time on request.		

2-450 Closing Device for Emergency-Exit

Hand and internal operable, Optional with Swinghandle, WKII/RC security tested, Meets DIN EN 179

