

6-060SL Wire Catch SNAP-LINE

Tool-less installation, Cable management

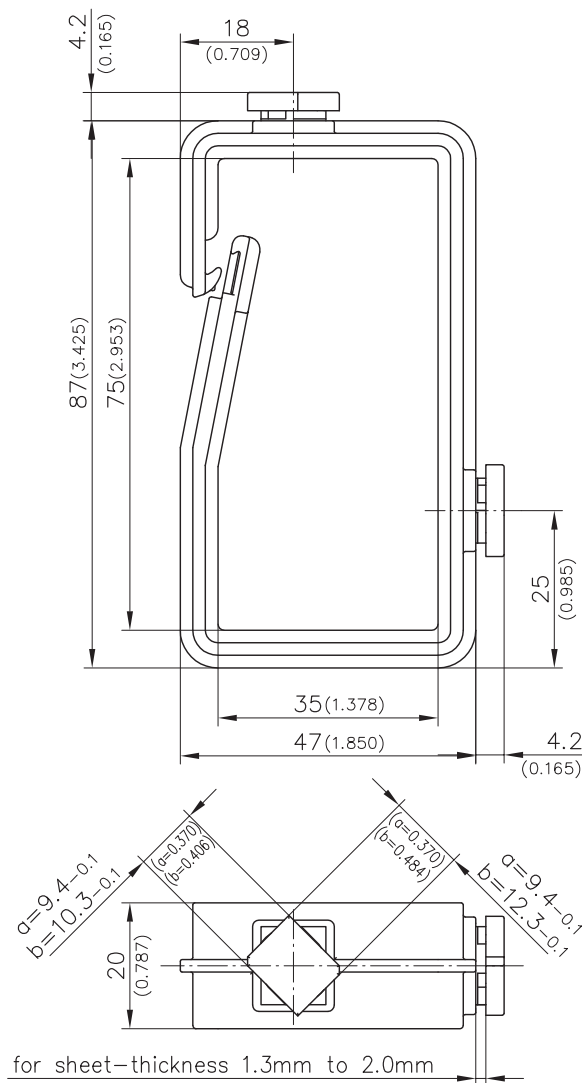


Product Notes:

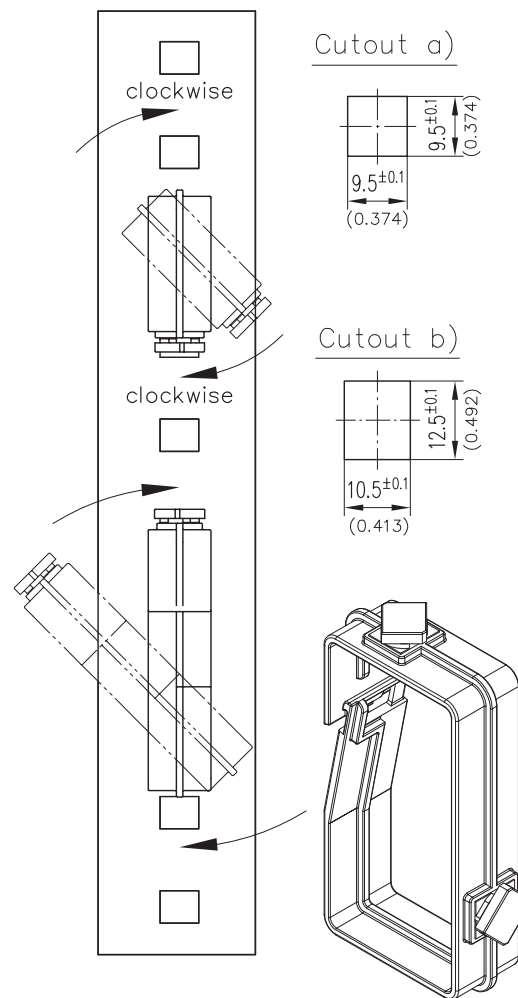
- Manage cables housed inside cabinets
- Installed in pre-punched frames and profiles
- Built-in clasp holds cables in place
- **Installation:** Position the wire catch at an angle of 45° into the cutout and turn 45° clockwise. Special shape holds wire catch securely in place.

Material:

- PA, Black



Example of application



| Version | Part No. |
|------------------------------------|-------------------|
| a) Wire catch 9.5x9.5 | 214-0106.50-00013 |
| b) Wire catch 12.5x10.5 (as drawn) | 214-0105.50-00013 |

Other cutouts and sheet thicknesses on request.