

7-300 Telescopic Stay

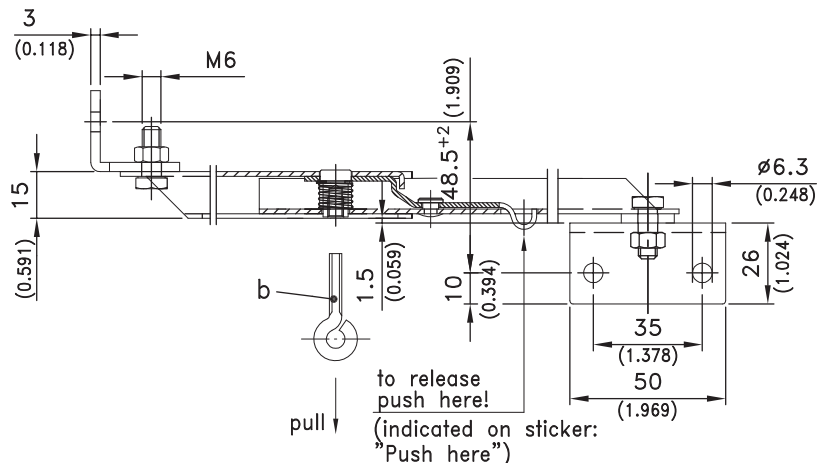
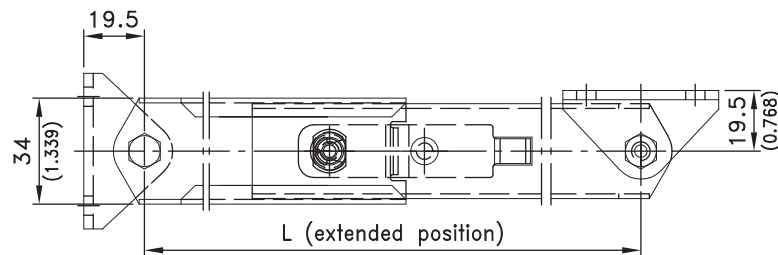
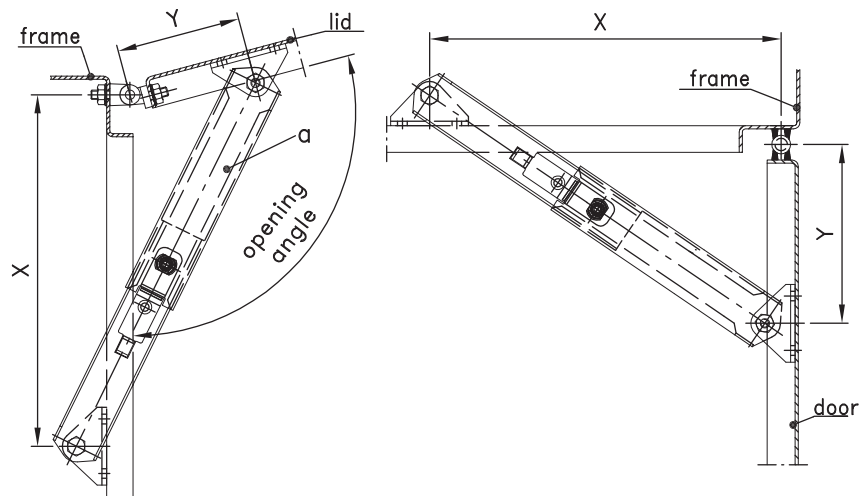
Stainless Steel

Product Notes:

- RH or LH application.
- For applications with two cover stays both stays can be released at same time by installing two eyelets connected with a steel wire.
- Dimensions X and Y determine the opening angle
- An example is illustrated below
- Steel - see Product System 7-300

Material:

- **Outer part, inner part, mounting bracket, snap lever, snap spike, spring and washer:** Stainless Steel AISI 304
- **Eyelet:** steel, zinc plated



	Length L, Retracted	Length L, Extended	Dimension X	Dimension Y	Opening Angle	Part No.
a) Telescopic Stay	370	710	620	220	105°	230-9501.00-00000
a1) Telescopic Stay	215	355	315	100	105°	230-9502.00-00000
b) Eyelet						860-0048.07-00420

Other length L on request.