

6-170.02 Telescopic Cover Support

short

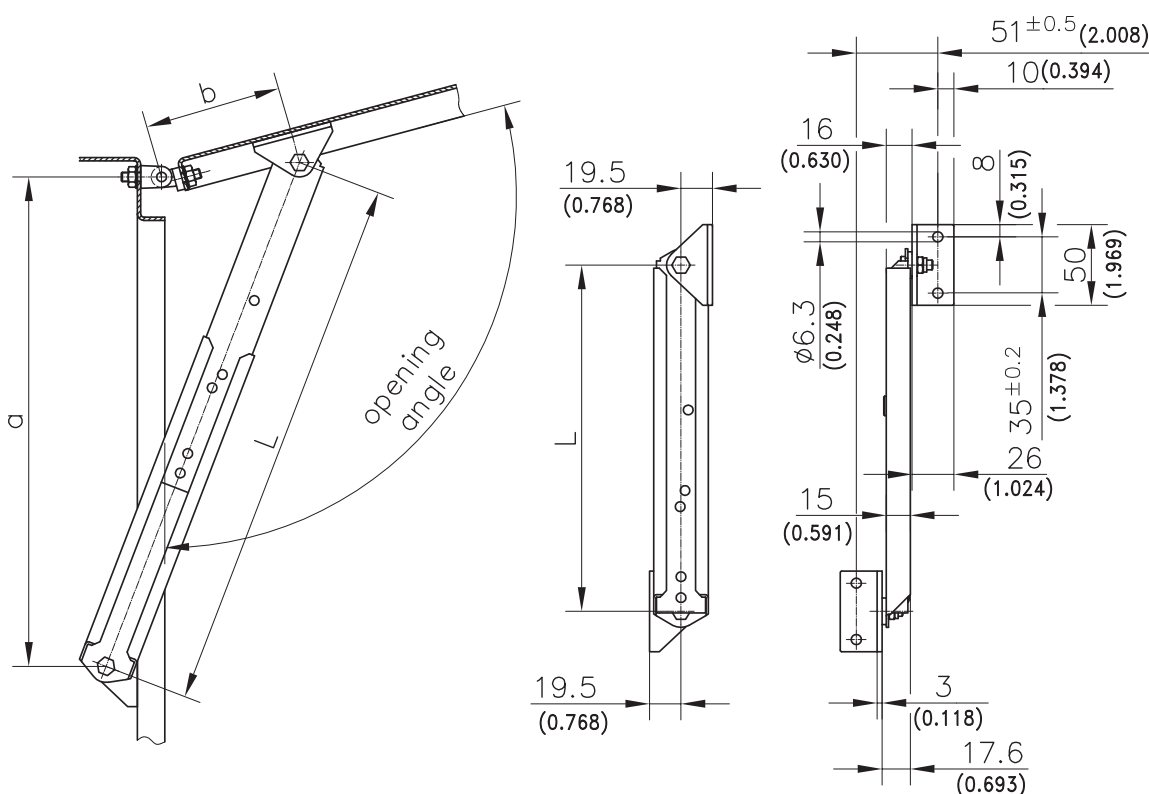


Product Notes:

- Automatic locking and release device
- To engage - extend to full length with a 3mm retraction to final position
To disengage - extend to full length to release catch
- RH and LH application
- Heavy duty design - cam plates are individually riveted and catch lever is stainless steel

Material:

- **Inner- and outer rails, mounting angles and cam plates:** Steel, Zinc Plated
- **Catch lever:** Stainless Steel (cast)



Version	L Retracted mm/inch	L Engaged mm/inch	L Extended mm/inch	Part No.	See Page
Telescopic Cover Support, short	215±2 / 8.456	335±2 / 13.189	365±2 / 14.370	230-9001	
Examples of application		Approx. Dimension a		Approx. Dimension b	
Opening Angle 90°		320 / 12.598		100 / 3.937	
Opening Angle 105°		304 / 11.969		85 / 3.346	
Opening Angle 120°		292 / 11.496		75 / 2.958	
Opening Angle 135°		286 / 11.260		65 / 2.559	
Dimensions are only valid in the shown assembly situation.					
(Hinge 217-9301/-9302)					04.40
Changing the assembly situation makes own tests necessary.					
Opening angle can be varied by changing dimensions a and b.					